



Exclusive Plot with License in Cala Brafí, Just a Few Minutes from the Sea

Price

880.000 €

Plot area
15.000m²

Built área
239m²

Bedrooms
4

Bathrooms
5

Location
Cala Brafí



Description: This exclusive building plot with a construction project is located in Cala Brafí, just a short walk from the sea and only a few minutes from the well-known beaches of Cala Sa Nau and Porto Colom. The area is peaceful and privileged, offering the perfect setting to enjoy the Mediterranean lifestyle.

The project envisions a well-designed and functional home, created to offer comfort and natural light throughout. On the main floor, you'll find a spacious living and dining area with direct access to the outdoor spaces, along with the kitchen and a guest toilet.

The layout includes three bedrooms, all with en-suite bathrooms, ensuring privacy and a balanced distribution of space. On the upper floor, an additional bedroom with en-suite bathroom is planned — ideal as a master suite or as a more private, independent space.

Outside, the property is designed for relaxation and outdoor living. A covered porch and a generous terrace next to the private swimming pool create the perfect setting to enjoy the Mediterranean climate for most of the year. There is also parking space for two vehicles, adding practicality and convenience.

Overall, this project in Cala Brafí combines a fantastic location close to the sea, a well-thought-out layout, and attractive outdoor areas, making it an excellent opportunity both as a permanent residence or as an investment in one of Mallorca's most sought-after areas.







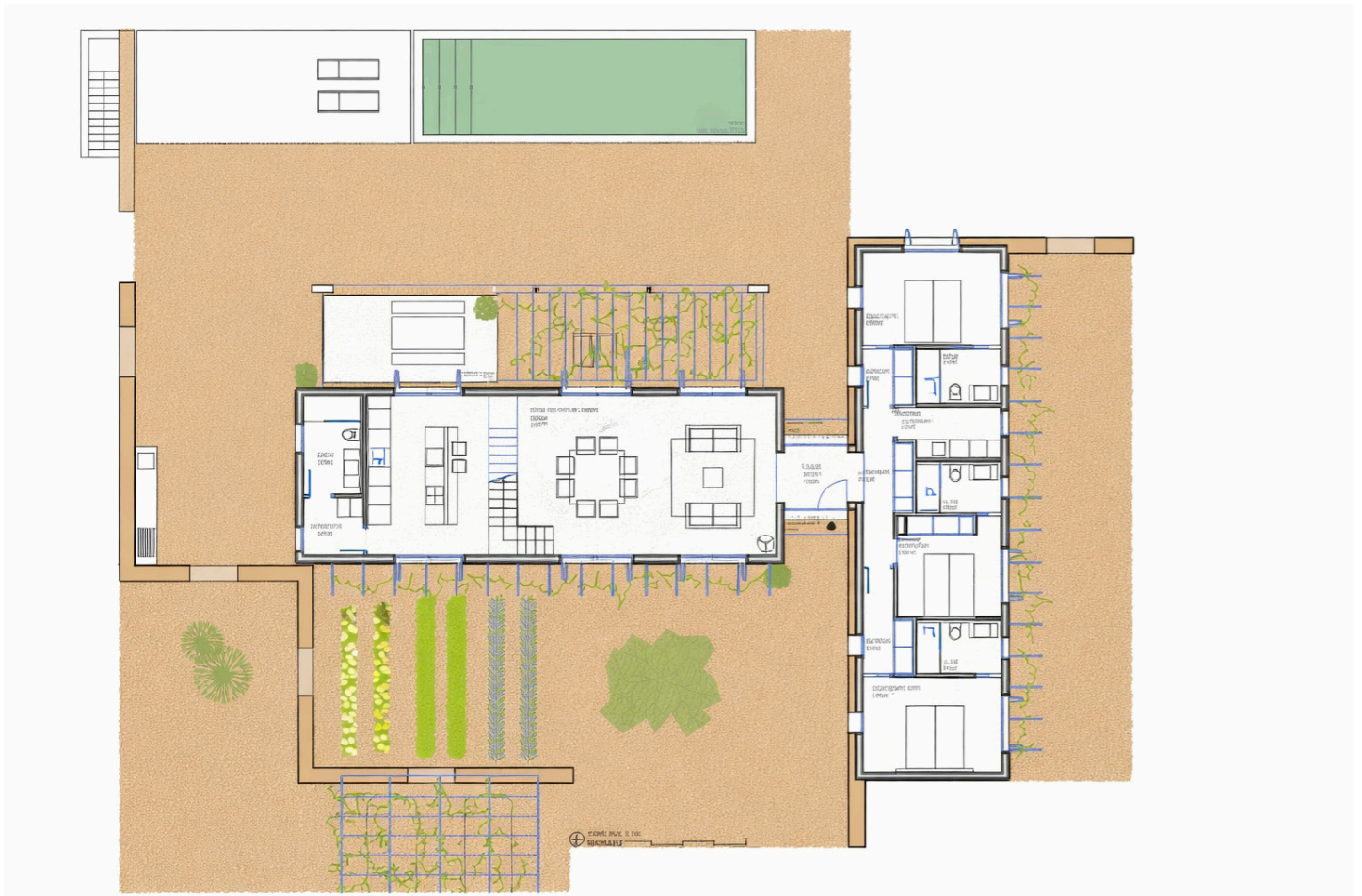
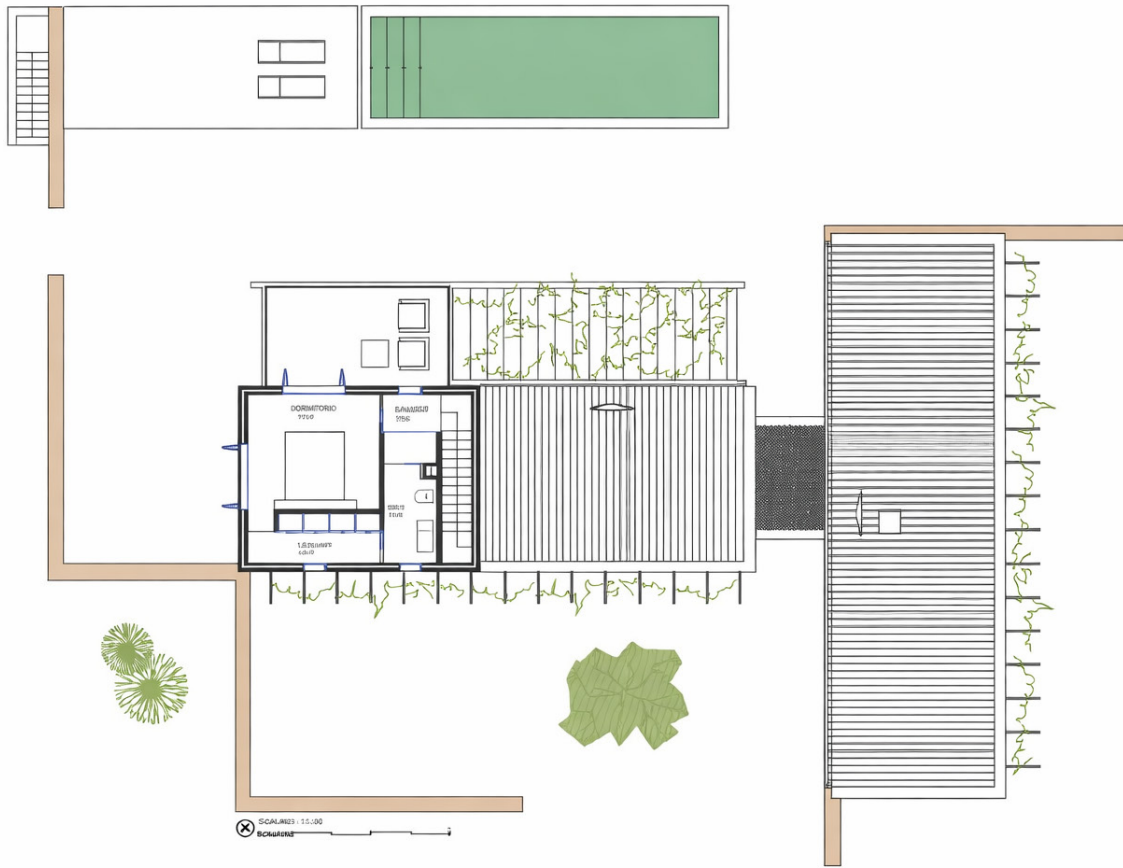


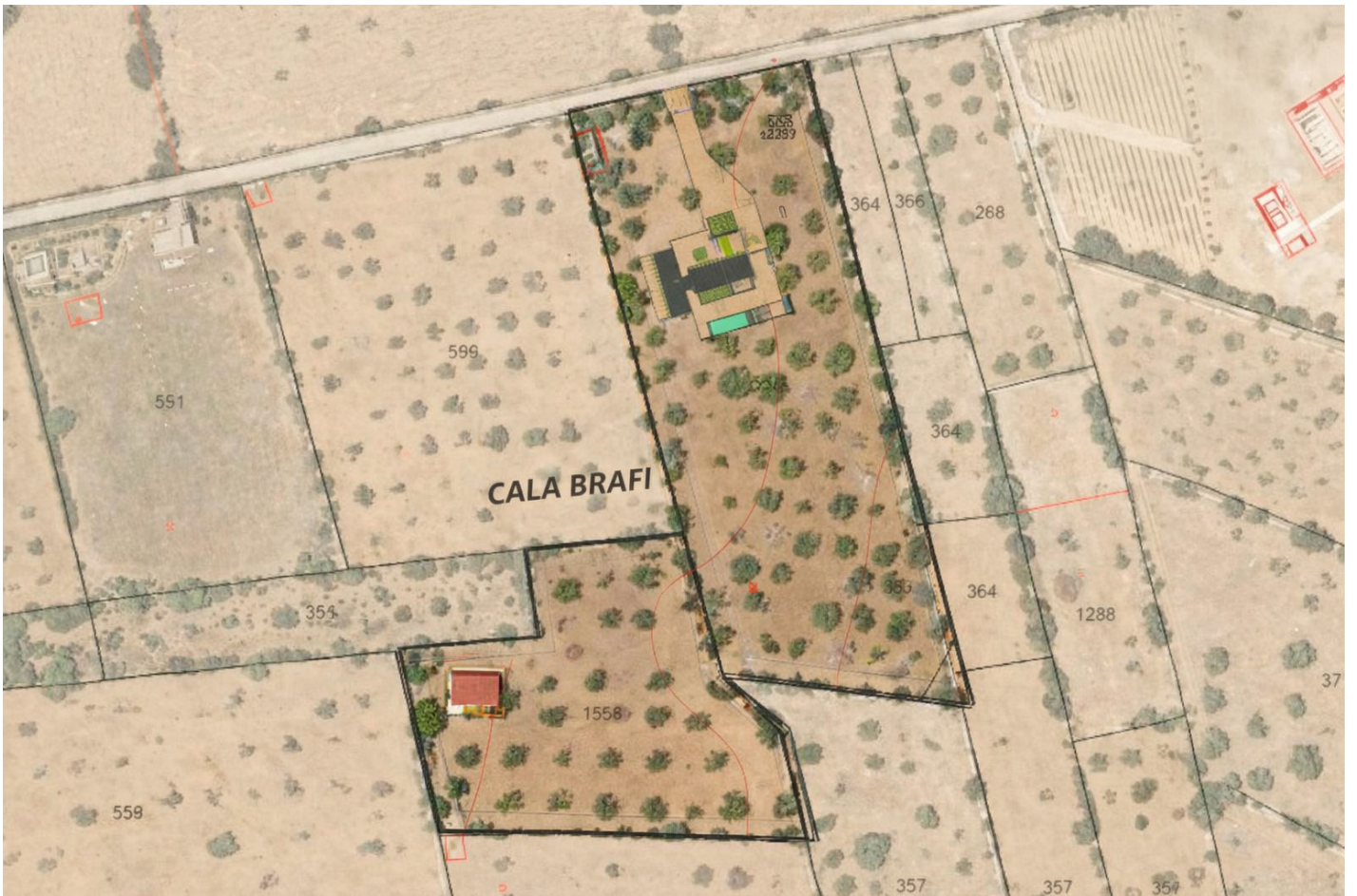
Location: Cala Brafí is a quiet coastal area, highly valued for its natural surroundings and proximity to the sea, ideal for those looking for a relaxed and truly Mediterranean lifestyle.

Just a few minutes away are some of the most attractive beaches in the southeast of Mallorca, such as Cala Brafí, Cala Sa Nau, Cala Mitjana and Cala Marçal, known for their crystal-clear waters and family-friendly atmosphere. Golf lovers will appreciate the nearby Vall d'Or Golf, an 18-hole course offering open views over the Mediterranean landscape.

The area is well connected to nearby towns such as Porto Colom, Santanyí and Manacor, where you will find restaurants, services and marinas. Palma Airport is approximately 45 minutes away by car.

Overall, Cala Brafí combines peace and quiet, excellent beaches, sporting options and good connections, making it an ideal location for both a permanent home and a holiday property.







The Exclusive Collection

Batle Andreu Burguera Mut 3
07640 Ses Salines, Mallorca
+34 660 990 707
dani.gonzalez@remax.es

Legal Notice and Data Protection

The content of this presentation, including texts, images, plans, logos, and any other material, is the exclusive property of "Remax Exclusive Collection" and is protected by intellectual and industrial property laws. Its total or partial reproduction, distribution, or communication, in any format or medium, is strictly prohibited without the express written authorization of the owner.

The data, prices, plans, and descriptions contained in this document are for informational purposes only and do not constitute a contractual commitment, and may be subject to modifications by the owner or developer.

In accordance with Regulation (EU) 2016/679 (GDPR) and Organic Law 3/2018 on Personal Data Protection and guarantee of digital rights (LOPDGDD), you are hereby informed that any personal data provided as part of this presentation will be treated confidentially for the purpose of responding to inquiries or managing requests for commercial information. Data subjects may exercise their rights of access, rectification, erasure, objection, and all other rights recognized by law by contacting juan.bonet@remax.es.

The information contained in this document is confidential and is provided exclusively to the recipient for informational and professional purposes. Any unauthorized disclosure or use is strictly prohibited.